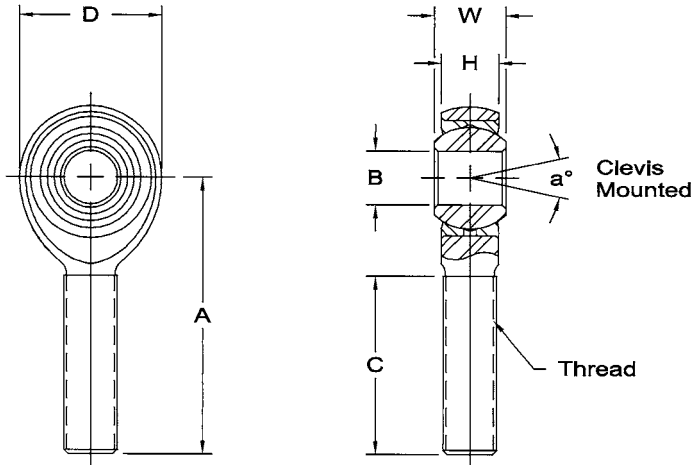


Pegasus Part No. AB-AMT Alloy Steel Rod Ends (Aurora AM and AB Series)

These high-strength rod end bearings provide excellent strength, durability, and safety. The body is made of alloy steel, heat-treated and anti-corrosion coated. The ball is heat treated and hard chrome plated alloy steel. The race is carbon steel with a self-lubricating PTFE fabric lining bonded to

it. These bearings are very resistant to loosening, even when subjected to the pounding they receive under racing conditions. Male threaded solid shanks only. Aurora AM-T (right hand threads) and AB-T (left hand threads) series.



Body: Alloy steel, heat treated, protective coated for corrosion resistance.

Race: Carbon steel, heat treated, protective coated for corrosion resistance.

Ball: Alloy steel, heat treated and hard chrome plated.

Lubrication: Self-lubricating PTFE liner.

Aurora AM (Right Hand) / AB (Left Hand) Alloy Steel Rod Ends, Male Threaded Shanks

B	Thread (UNF-3A)	C	A	W	H	D	a°	Weight, Ounces (Approx.)	Static Radial Load Rating†	Pegasus Part No.
Bore		Thread Length	Center of Bore to End of Shank	Ball Width	Head Thickness	Head Diameter	Misalignment Angle			
+0.0015 -0.0005		+0.062 -0.031	±0.010	+0.000 -0.005	±0.005	±0.010				
1/4"	1/4-28	1"	1 9/16"	3/8"	9/32"	3/4"	16°	.7	5260 lb	AB-AMT-4-L or -R
5/16"	5/16-24	1 3/16"	1 7/8"	7/16"	11/32"	7/8"	14°	1.2	7639 lb	AB-AMT-5-L or -R
3/8"	3/8-24	1 3/16"	1 15/16"	1/2"	13/32"	1"	12°	1.8	9544 lb	AB-AMT-6-L or -R
7/16"	7/16-20	1 5/16"	2 1/8"	9/16"	7/16"	1 1/8"	14°	2.6	10,285 lb	AB-AMT-7-L or -R
1/2"	1/2-20	1 7/16"	2 7/16"	5/8"	1/2"	1 5/16"	12°	4	16,238 lb	AB-AMT-8-L or -R
5/8"	5/8-18	1 9/16"	2 5/8"	3/4"	9/16"	1 1/2"	16°	6.1	17,955 lb	AB-AMT-10-L or -R
3/4"	3/4-16	1 11/16"	2 7/8"	7/8"	11/16"	1 3/4"	14°	10	28,081 lb	AB-AMT-12-L or -R
7/8"	7/8-14	2"	3 3/8"	7/8"	49/64"	2"	7°	15	45,051 lb	AB-AMT-14-L or -R
1"*	1 1/4-12	2 1/8"	4 1/8"*	1 3/8"	1"*	2 3/4"*	17°	38.8	76,200 lb	AB-AMT-16-L or -R

* Tolerance variation: B +0.0035/-0.0005, A ±0.020, H ±0.010, D ±0.020

† Divide by 10 to calculate the axial load rating.

Part No. AB-AMT Alloy Steel Rod Ends, Male Shank

All Aurora Rod End Bearings

Suspension Technical Documents



Pegasus Auto Racing Supplies
2475 S 179th St
New Berlin, WI 53146

1-800-688-6946 / 262-317-1234
1-262-317-1201 (fax)
www.PegasusAutoRacing.com